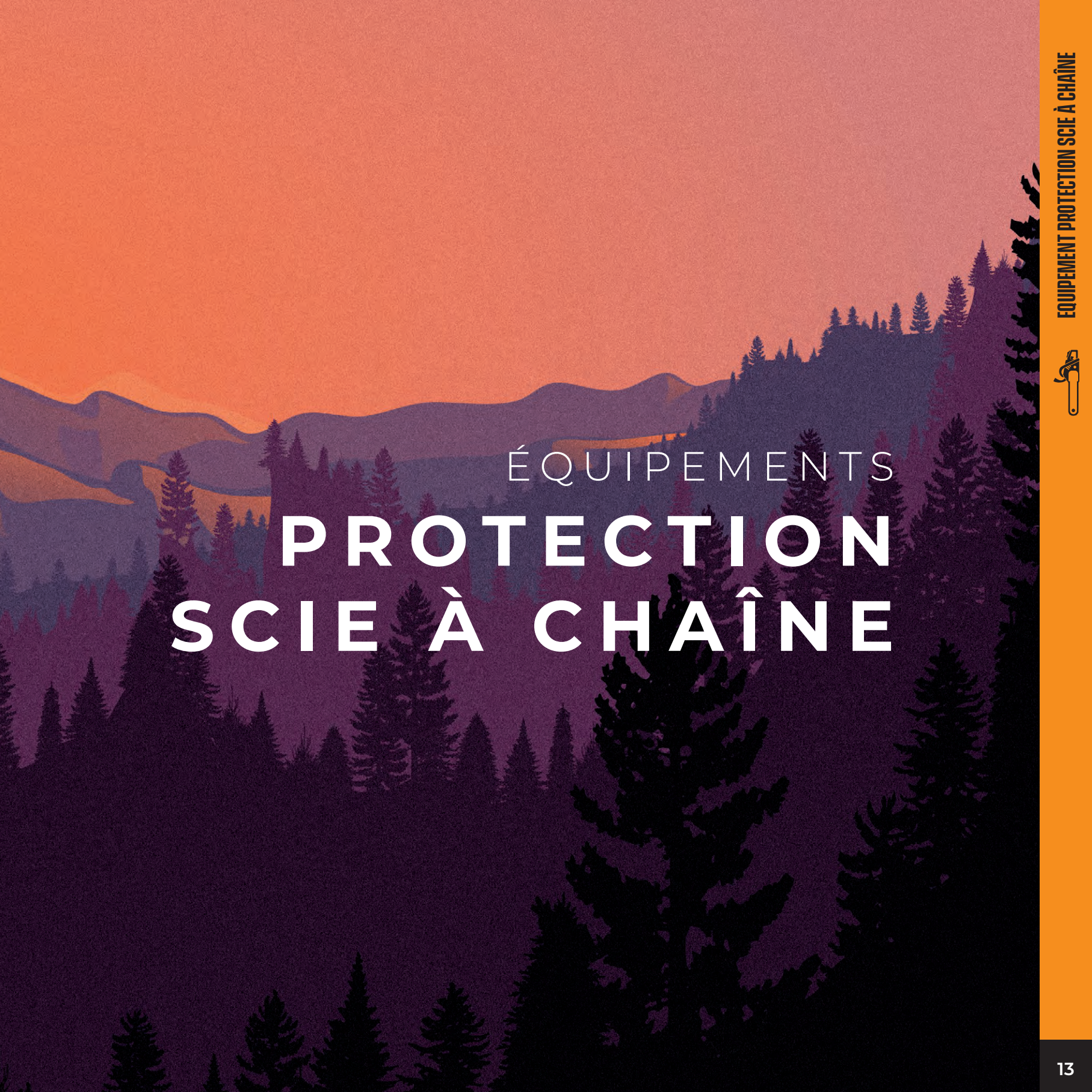




**SOLIDUR**  
FOREST

The logo is a shield-shaped emblem with a white border. It features a horizontal white band across the middle containing the word "SOLIDUR" in bold, black, uppercase letters. Below this band, the word "FOREST" is written in white, uppercase letters against a dark orange background. The top and bottom sections of the shield are a lighter orange color.





ÉQUIPEMENTS  
**PROTECTION**  
**SCIE À CHAÎNE**

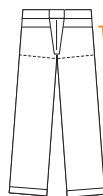




## AUTHENTIC EN 381-5:1995 CLASSE 1 TYPE A

CODE : AUPARE

CODE : AUPA / AUPA7P / AUPA7M

Du XS  
au 4XLcode : AUPA7P  
+ 7 cmcode : AUPA7M  
- 7 cm

MATIÈRE	Polyester 150 g - hydrophobe
POCHES	2 poches italiennes, 1 poche mètre, 1 poche clé à bougie
PROTECTION	5 couches 100% polyester
DOUBLURE	100% polyester mesh, stretch
POIDS / TAILLES	1,050 Kg / XS -> 4XL



FABRIC	Hydrophobic polyester 150 g
POCKETS	2 side pockets, 1 ruler pocket, 1 plug spanner pocket
PROTECTION	5 layers 100% polyester
LINING	100% polyester mesh, stretch
WEIGHT / SIZE	1,050 Kg / XS -> 4XL



MATERIAL	Polyester 150 g - hydrophob
TASCHEN	2 schräg gestellt / 1 Meßwerkfach / 1 Zündkerzenschlüssel Tasche
SCHUTZ	5 Schichten aus 100% Polyester
FUTTER	100% Polyester-Netz, stretch
GEWICHT / GRÖßE	1,050 Kg / XS -> 4XL



MATERIA	Poliéster 150 g - hidrófobo
BOLSILLOS	2 inclinada bolsillo metros / 1 / 1 bolsillo llave de bujías
PROTECCIÓN	5 capas de 100% poliéster
REVESTIMIENTO	100% de malla de poliéster, estiramiento
PESO / TAMAÑO	1,050 Kg / XS -> 4XL



MATERIALE	Poliestere 150 g - idrofobo
TASCHE	2 inclinato / 1 tasca metro / 1 scintilla tasca spina chiave
PROTEZIONE	6 strati di poliestere 100%
RIVESTIMENTO	100% maglia del poliestere, elasticizzato
PESO / TAGLIA	1,050 Kg / XS -> 4XL



Classe 1



TYPE A



POLYESTER

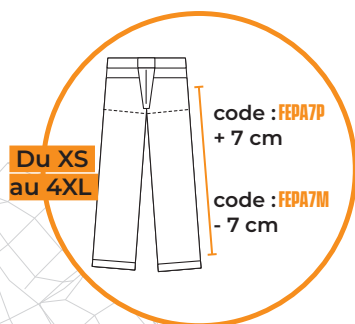


DÉPERLANT

5 LAYERS  
CONCEPTSTANDARD  
kwf

# FELIN EN 381-5:1995 CLASSE 1 TYPE A

CODE : **FEP**A / **FEP**A7P / **FEP**A7M



MATIÈRE	Polyester extensible - hydrophobe.
POCHES	2 poches italiennes, 1 poche mètre, 1 poche clé à bougie
PROTECTION	5 couches 100% polyester
DOUBLURE	100% polyester mesh, stretch
POIDS / TAILLES	1,050 Kg / XS -> 4XL



FABRIC	Stretch polyester - hydrophobic.
POCKETS	2 side pockets, 1 ruler pocket, 1 plug spanner pocket
PROTECTION	5 layers 100% polyester
LINING	100% polyester mesh, stretch
WEIGHT / SIZE	1,050 Kg / XS -> 4XL



MATERIAL	Stretch Polyester - hydrophob.
TASCHEN	2 schräg gestellt / 1 Meßwerkfach / 1 Zündkerzenschlüssel Tasche
SCHUTZ	5 Schichten aus 100% Polyester
FUTTER	100% Polyester-Netz, stretch
GEWICHT / GRÖßE	1,050 Kg / XS -> 4XL



MATERIA	Stretch poliéster - hidrófobo.
BOLSILLOS	2 inclinada bolsillo metros / 1 / 1 bolsillo llave de bujías
PROTECCIÓN	5 capas de 100% poliéster
REVESTIMIENTO	100% de malla de poliéster, estiramiento
PESO / TAMAÑO	1,050 Kg / XS -> 4XL



MATERIALE	Stretch in poliester - idrofobo.
TASCHE	2 inclinato / 1 tasca metro / 1 scintilla tasca spina chiave
PROTEZIONE	5 strati di poliester 100%
RIVESTIMENTO	100% maglia del poliester, elasticizzato
PESO / TAGLIA	1,050 Kg / XS -> 4XL





**COMFY EN 381-5:1995 CLASSE 1 TYPE A**CODE : **COPA9R / COPA7PGR / COPA7MGR**CODE : **COPARE / COPA7PRE / COPA7MRE**Du XS  
au 4XLcode : **COPA7PGR / COPA7PRE**  
+ 7 cmcode : **COPA7MGR / COPA7MRE**  
- 7 cm

MATIÈRE	Poly / cotton 65/35 230 g/m <sup>2</sup> , Armortex 78,8%, Nylon 11,2%, Kevlar 10% PU, Cordura 100% 500D 235 g/m <sup>2</sup> , Coolmax 125 g/m <sup>2</sup>
POCHES	2 poches italiennes, 1 poche mètre, 1 poche plaquée, 1 poche clé à bougie, 1 poche pansement
PROTECTION	5 couches 100% polyester
DOUBLURE	Coolmax stretch 125 g/m <sup>2</sup>
POIDS / TAILLES	1,350 Kg / XS -> 4XL



FABRIC	Poly / cotton 65/35 230 g/m <sup>2</sup> , Armortex 78,8%, Nylon 11,2%, Kevlar 10% PU, 500d Cordura 100% 235 g/m <sup>2</sup> , Coolmax 125 g/m <sup>2</sup>
POCKETS	2 slanted, 1 meter pocket, 1 pocket, one key pocket bougie, 1 pouch dressing
PROTECTION	5 layers 100% polyester
LINING	Coolmax stretch 125 g/m <sup>2</sup>
WEIGHT / SIZE	1,350 Kg / XS -> 4XL



MATERIAL	Poly / baumwolle 65/35 230 g/m <sup>2</sup> , Armortex 78,8%, Nylon 11,2%, Kevlar 10% PU, 500d Cordura 100% 235 g/m <sup>2</sup> , Coolmax 125 g/m <sup>2</sup>
TASCHEN	2 geneigt, 1 Meter Tasche, 1 Tasche, eine Schlüsseltasche bougie, 1 pouch dressing
SCHUTZ	5 Schichten aus 100% Polyester
FUTTER	Coolmax stretch 125 g/m <sup>2</sup>
GEWICHT / GRÖßE	1,350 Kg / XS -> 4XL



MATERIA	Poli / algodón 65/35 230 g/m <sup>2</sup> , Armortex 78,8%, Nylon 11,2%, Kevlar 10% PU, 500d Cordura 100% 235 g/m <sup>2</sup> , Coolmax 125 g/m <sup>2</sup>
BOLSILLOS	2 inclinada, bolsillo 1 metro, 1 bolsillo, una de las claves de la vela de bolsillo, 1 vendaje de saco
PROTECCIÓN	5 capas de 100% poliéster
REVESTIMIENTO	Coolmax tramo de 125 g/m <sup>2</sup>
PESO / TAMAÑO	1,350 Kg / XS -> 4XL



MATERIALE	Poli / cotone 65/35 230 g/m <sup>2</sup> , Armortex 78,8%, Nylon 11,2%, Kevlar 10% PU, 500d Cordura 100% 235 g/mq, Coolmax 125 g/mq
TASCHE	2 inclinati, 1 tasca metro, 1 tasca, una tasca chiave bougie, 1 spogliatoio sacchetto
PROTEZIONE	5 strati di poliestere 100%
RIVESTIMENTO	Coolmax tratto de 125 g/mq
PESO / TAGLIA	1,350 Kg / XS -> 4XL



# INFINITY EN 381-5:1995 CLASSE 1 TYPE A

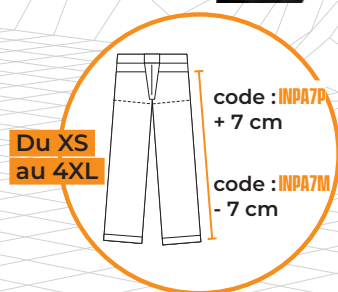


CODE : **INPA**  
**INPA7P**  
**INPA7M**



MATIÈRE	Nylon 4 ways stretch 92%, polyamide 8% spandex, Armortex 78,8% Nylon 11,2% Kevlar 10% PU, Cordura 100% 500D 235 g/m <sup>2</sup> , Coolmax 125 g/m <sup>2</sup>
POCHES	2 poches italiennes, 1 poche mètre, 1 poche plaquée, 1 poche clé à bougie, 1 poche pansement
PROTECTION	5 couches 100% polyester
DOUBLURE	Coolmax stretch 125 g/m <sup>2</sup>
POIDS / TAILLE	1,300 Kg / s -> 4XL

CODE : **INPAOR**



**ARMORTEX**  
**KEVLAR**

**COOLMAX**

**CORDURA**  
FABRIC



FABRIC	Nylon 4 ways stretch 92% polyamide 8% spandex, Armortex 78,8% Nylon 11,2% Kevlar 10% PU, 100% Cordura 500D 235 g/m <sup>2</sup> , Coolmax 125 g/m <sup>2</sup>
POCKETS	2 slanted, 1 meter pocket, 1 pocket, one key pocket bougie 1 pouch dressing
PROTECTION	5 layers 100% polyester
LINING	Coolmax stretch 125 g/m <sup>2</sup>
WEIGHT / SIZE	1,300 Kg / s -> 4XL



MATERIAL	Poly / Baumwolle 65/35 230 g/m <sup>2</sup> Armortex 78,8%, 11,2% Nylon, Kevlar 10% PU, 500D Cordura 100% 235 g/m <sup>2</sup> , Coolmax 125 g/m <sup>2</sup>
TASCHEN	2 geneigt, 1 Meter Tasche, 1 Tasche, eine Schlüsseltasche bougie 1 pouch dressing»
SCHUTZ	5 Schichten aus 100% Polyester
FUTTER	Coolmax stretch 125 g/m <sup>2</sup>
GEWICHT / GRÖÖE	1,300 Kg / s -> 4XL



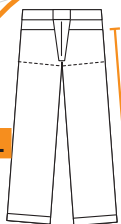
MATERIA	Nylon 4 formas se extienden 92%, poliámidá 8% spandex. Armortex 78,8% 11,2% Nylon, Kevlar 10% de PU. 100% Cordura 500D 235 g/m <sup>2</sup> , Coolmax 125 g/m <sup>2</sup>
BOLSILLOS	2 inclinada, bolsillo 1 metro, 1 bolsillo, 1 de las claves de la vela de bolsillo, 1 vendaje de saco
PROTECCIÓN	5 capas de 100% poliéster
REVESTIMIENTO	Coolmax tramo de 125 g/m <sup>2</sup>
PESO / TAMAÑO	1,300 Kg / s -> 4XL



MATERIALE	Nylon 4 modi elasticizzato 92%, poliammide 8% spandex. Armortex 78,8% 11,2% Nylon Kevlar 10% PU, 100% Cordura 500D 235 g/mq, Coolmax 125 g/m <sup>2</sup>
TASCHE	2 inclinati, 1 tasca metro, 1 tasca, una tasca chiave bougie 1 spogliatoio sacchetto
PROTEZIONE	5 strati di poliesterre 100%
RIVESTIMENTO	Coolmax tratto 125 g/m <sup>2</sup>
PESO / TAGLIA	1,300 Kg / s -> 4XL





**SOFRESH EN 381-5:1995 CLASSE 1 TYPE A**CODE : **FRPA / FRPA7P / FRPA7M**Du S  
au 4XLcode : **FRPA7P**  
+ 7 cmcode : **FRPA7M**  
- 7 cm**ARMORTEX**  
**KEVLAR****COOLMAX**

MATIÈRE	100% Nylon 6.6, Armortex 78,8% Nylon 11,2% Kevlar 10% PU
POCHES	2 poches italiennes, 1 poche mètre, 1 poche plaquée, 1 poche clé à bougie, 1 poche pansement
PROTECTION	5 couches 100% polyester
DOUBLURE	Coolmax stretch 125 g/m <sup>2</sup>
POIDS / TAILLE	1,200 Kg / s -> 4XL



FABRIC	100% Nylon 6.6, Armortex 78,8% 11,2% Nylon Kevlar 10% PU
POCKETS	2 slanted, 1 meter pocket, 1 pocket, 1 key pocket bougie, 1 pouch dressing
PROTECTION	5 layers 100% polyester
LINING	Coolmax stretch 125 g/m <sup>2</sup>
WEIGHT / SIZE	1,200 Kg / s -> 4XL



MATERIAL	100% Nylon 6.6, Armortex 78,8% 11,2% Nylon Kevlar 10% PU
TASCHEN	2 geneigt, 1 Meter Tasche, 1 Tasche, 1 Schlüsseltasche bougie, 1 pouch dressing
SCHUTZ	5 Schichten aus 100% Polyester
FUTTER	Coolmax stretch 125 g/m <sup>2</sup>
GEWICHT / GRÖßE	1,200 Kg / s -> 4XL



MATERIA	100% Nylon 6.6, Armortex 78,8% 11,2% Nylon Kevlar 10% PU
BOLSILLOS	2 inclinada, bolsillo 1 metro, 1 bolsillo, 1 de las claves de la vela de bolsillo, 1 vendaje de saco
PROTECCIÓN	5 capas de 100% poliéster
REVESTIMIENTO	Coolmax TRAMO DE 125 g/m <sup>2</sup>
PESO / TAMAÑO	1,200 Kg / s -> 4XL



MATERIALE	100% Nylon 6.6, Armortex 78,8% 11,2% Nylon Kevlar 10% PU
TASCHE	2 inclinati, 1 tasca metro, 1 tasca, una tasca chiave bougie 1 spogliatoio sacchetto
PROTEZIONE	5 strati di poliestere 100%
RIVESTIMENTO	Coolmax TRATTO 125 g/mq
PESO / TAGLIA	1,200 Kg / s -> 4XL



# SOSTRONG EN 381-5:1995 CLASSE 1 TYPE A

CODE : **STPA**



**CORDURA**  
FABRIC

DuPont™  
**Nomex**®

**ARMORTEX**  
**KEVLAR**

**COOLMAX**



MATIÈRE	50% Kevlar, 31% Nomex, 18,5% PU
POCHES	2 poches italiennes, 1 poche mètre, 1 poche plaquée, 1 poche clé à bougie, 1 poche pansement
PROTECTION	5 couches 100% polyester
DOUBLURE	Coolmax stretch 325 g/m <sup>2</sup>
POIDS / TAILLE	1,350 Kg / s -> 4XL



FABRIC	50% Kevlar, 31% Nomex, 18,5% PU
POCKETS	2 slanted, 1 meter pocket, 1 pocket, 1 key pocket bougie, 1 pouch dressing
PROTECTION	5 layers 100% polyester
LINING	Coolmax stretch 325 g/m <sup>2</sup>
WEIGHT / SIZE	1,350 Kg / s -> 4XL



MATERIAL	50% Kevlar, 31% Nomex, 18,5% PU
TASCHE	2 geneigt, 1 Meter Tasche, 1 Tasche, 1 Schlüsseltasche bougie, 1 pouch dressing
SCHUTZ	5 Schichten aus 100% Polyester
FUTTER	Coolmax stretch 325 g/m <sup>2</sup>
GEWICHT / GRÖÖE	1,350 Kg / s -> 4XL



MATERIA	50% Kevlar, 31% Nomex, 18,5% PU
BOLSILLOS	2 inclinada, bolsillo 1 metro, 1 bolsillo, 1 de las claves de la vela de bolsillo, 1 vendaje de saco
PROTECCIÓN	5 capas de 100% poliéster
REVESTIMIENTO	Coolmax TRAMO DE 325 g/m <sup>2</sup>
PESO / TAMAÑO	1,350 Kg / s -> 4XL



MATERIALE	50% Kevlar, 31% Nomex, 18,5% PU
TASCHE	2 inclinati, 1 tasca metro, 1 tasca, una tasca chiave bougie, 1 spogliatoio sacchetto
PROTEZIONE	5 strati di poliestere 100%
RIVESTIMENTO	Coolmax TRATTO 325 g/mq
PESO / TAGLIA	1,350 Kg / s -> 4XL







# climb

Go higher safely

## CLIMB PROTÉGÉ CLIPH

# PROTECTED

# TO THE TOP



► Front

CODE : CLIPH



**ARMORTEX**  
**KEVLAR**

**CORDURA**  
FABRIC



► Back



<b>MATIÈRE</b>	100% extensible. Cordura, spandex, Kevlar.
<b>POCHES</b>	2 poches italiennes, 2 poches plaquées 1 poche dos
<b>PROTECTION</b>	5 couches 100% polyester
<b>DOUBLURE</b>	100% polyester mesh, stretch
<b>POIDS / TAILLE</b>	1,050 Kg / XS -> 4XL



<b>FABRIC</b>	100% stretch. Cordura, spandex, Kevlar.
<b>POCKETS</b>	2 pockets, 2 patch pockets, one back pocket
<b>PROTECTION</b>	5 layers 100% polyester
<b>LINING</b>	100% polyester mesh, stretch
<b>WEIGHT / SIZE</b>	1,050 Kg / XS -> 4XL



<b>MATERIAL</b>	100% Dehnung. Cordura, Spandex, Kevlar.
<b>TASCHEN</b>	2 Taschen, 2 aufgesetzte Taschen, eine Gesäßtasche
<b>SCHUTZ</b>	5 Schichten aus 100% Polyester
<b>FUTTER</b>	100% Polyester-Netz, stretch
<b>GEWICHT / GRÖßE</b>	1,050 Kg / XS -> 4XL



<b>MATERIA</b>	100% estiramiento. Cordura, spandex, kevlar.
<b>BOLSILLOS</b>	2 bolsillos, 2 bolsillos de parche, un bolsillo trasero
<b>PROTECCIÓN</b>	5 capas de 100% poliéster
<b>REVESTIMIENTO</b>	100% de malla de poliéster, estiramiento
<b>PESO / TAMAÑO</b>	1,050 Kg / XS -> 4XL



<b>MATERIALE</b>	Tratto al 100%. Cordura, spandex, Kevlar.
<b>TASCHE</b>	2 tasche italiane, 2 tasche applicate, una tasca posteriore
<b>PROTEZIONE</b>	5 strati di poliesteri 100%
<b>RIVESTIMENTO</b>	100% maglia del poliesteri, elasticizzato
<b>PESO / TAGLIA</b>	1,050 Kg / XS -> 4XL







# VESTE CLIMB **CLIVEH**



MATIÈRE	4ways Stretch Cordura
PROTECTION	Renforts Kevlar aux épaules Renforts Cordura aux avant bras
DOUBLURE	Mesh Polyester



FABRIC	4ways Stretch Cordura
PROTECTION	Kevlar reinforcements on the shoulders Erneuert die Cordura on the forearms
LINING	Mesh Polyester



MATERIAL	4ways Stretch Cordura
SCHUTZ	Kevlar-Verstärkungen an den Schultern Erneuert die Cordura an den Unterarmen
FUTTER	Mesh Polyester



MATERIA	4ways Stretch Cordura
PROTECCIÓN	Refuerzos de kevlar en los hombros. Erneuert die Cordura en los antebrazos
REVESTIMIENTO	Mesh Polyester



MATERIALE	4ways Stretch Cordura
PROTEZIONE	Rinforzi in kevlar sulle spalle Erneuert die Cordura sugli avambracci
RIVESTIMENTO	Mesh Polyester



# AUTHENTIC EN 381-5:1995 CLASSE 1 TYPE A

CODE : **AUSA / AUSARE**



Du S  
au 3XL

Du XS  
au 4XL



MATIÈRE	Polyester 150 g - hydrophobe.
POCHES	2 poches italiennes, 1 poche mètre, 1 poche clé à bougie.
PROTECTION	5 couches 100% polyester
DOUBLURE	100% polyester MESH, stretch
POIDS	1,115 Kg



FABRIC	Hydrophobic polyester 150 g.
POCKETS	2 side pockets, 1 ruler pocket, 1 plug spanner pocket.
PROTECTION	5 layers 100% polyester
LINING	100% polyester MESH, stretch
WEIGHT	1,115 Kg



MATERIAL	Polyester 150 g - hydrophob.
TASCHEN	2 schräg gestellt / 1 Meßwerkfach / 1 Zündkerzenschlüssel Tasche
SCHUTZ	5 Schichten aus 100% Polyester
FUTTER	100% polyester-Netz, stretch
GEWICHT	1,115 Kg



MATERIA	Poliéster 150 g - hidrófobo.
BOLSILLOS	2 inclinada bolsillo metros / 1 / 1 bolsillo llave de bujías
PROTECCIÓN	5 capas de 100% poliéster
REVESTIMIENTO	100% de malla de poliéster, estiramiento
PESO	1,115 Kg



MATERIALE	Poliestere 150 g - idrofobo.
TASCHE	2 inclinato / 1 tasca metro / 1 scintilla tasca spina chiave
PROTEZIONE	5 strati di poliestere 100%
RIVESTIMENTO	100% maglia del poliestere, elasticizzato
PESO	1,115 Kg







# AUTHENTIC EN 381-11:2002 CLASSE 1



CODE : **AUVE**

CODE : **AUVERE**



MATIÈRE	Polyester 150 g - hydrophobe
POCHES	2 poches extérieures, 2 grandes poches à l'intérieur
PROTECTION	8-11 couches 100% polyester
DOUBLURE	100% polyester MESH, stretch
POIDS / TAILLE	1,650 Kg / XS -> 4XL



FABRIC	Hydrophobic polyester 150 g.
POCKETS	2 outside pockets, 2 large pockets inside
PROTECTION	8-11 layers of 100% polyester
LINING	100% polyester MESH, stretch
WEIGHT / SIZE	1,650 Kg / XS -> 4XL



MATERIAL	Polyester 150 g - hydrophob.
TASCHEN	2 Außentaschen, 2 große Innentaschen
SCHUTZ	8-11 Schichten aus 100% Polyester
FUTTER	100% polyester-Netz, stretch
GEWICHT / GRÖßE	1,650 Kg / XS -> 4XL



MATERIA	Poliéster 150 g - hidrófobo.
BOLSILLOS	2 bolsillos exteriores, 2 grandes bolsillos interiores
PROTECCIÓN	8-11 capas de 100% poliéster
REVESTIMIENTO	100% de malla de poliéster, estiramiento
PESO / TAMAÑO	1,650 Kg / XS -> 4XL



MATERIALE	Poliestere 150 g - idrofobo.
TASCHE	2 tasche esterne, 2 grandi tasche interne
PROTEZIONE	8-11 strati di poliestere 100%
RIVESTIMENTO	100% maglia del poliestere, elasticizzato
PESO / TAGLIA	1,650 Kg / XS -> 4XL





# AUTHENTIC EN 381-5:1995 CLASSE 1 TYPE A

CODE : **AUJARE**

CODE : **AUJA**



MATIÈRE	Polyester 150 g - hydrophobe
PROTECTION	5 couches 100% polyester
DOUBLURE	100% polyester MESH, stretch
POIDS / TAILLE	1,200 Kg / taille unique



FABRIC	Hydrophobic polyester 150 g.
PROTECTION	5 layers 100% polyester
LINING	100% polyester MESH, stretch
WEIGHT / SIZE	1,200 Kg / one size



MATERIAL	Polyester 150 g - hydrophob.
SCHUTZ	5 Schichten aus 100% Polyester
FUTTER	100% polyester-Netz, stretch
GEWICHT / GRÖßE	1,200 Kg / eine Größe



MATERIA	Poliéster 150 g - hidrófobo.
PROTECCIÓN	5 capas de 100% poliéster
REVESTIMIENTO	100% de malla de poliéster, estiramiento
PESO / TAMAÑO	1,200 Kg / talla única



MATERIALE	Poliestere 150 g - idrofobo.
PROTEZIONE	5 strati di poliestere 100%
RIVESTIMENTO	100% maglia del poliestere, elasticizzato
PESO / TAGLIA	1,200 Kg / taglia unica



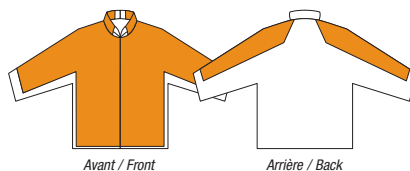
## COMFY EN 381-11:2002 CLASSE 1

CODE : COVE



**ARMORTEX**  
**KEVLAR**

**CORDURA**  
FABRIC



MATIÈRE	65% polyester, 20% Cordura, 10% Nylon, 3% Kevlar, 2% Spandex
POCHES	2 poches extérieures, 2 grandes poches à l'intérieur
PROTECTION	8-11 couches 100% polyester / Protection ventrale
DOUBLURE	100% polyester MESH
POIDS / TAILLE	1,700 Kg / XS -> 4XL



FABRIC	65% polyester, 20% Cordura, 10% Nylon, Kevlar 3%, 2% Spandex
POCKETS	2 outside pockets, 2 large pockets inside
PROTECTION	8-11 layers of 100% polyester / ventral Protection
LINING	100% polyester MESH
WEIGHT / SIZE	1,700 Kg / XS -> 4XL



MATERIAL	65% polyester, 20% Cordura, 10% Nylon, Kevlar 3%, 2% Spandex
TASCHEN	2 Außentaschen, 2 große Innentaschen
SCHUTZ	8-11 Schichten aus 100% Polyester / ventralen Schutz
FUTTER	100% Polyester-Netz
GEWICHT / GRÖßE	1,700 Kg / XS -> 4XL



MATERIA	65% polyester, 20% Cordura, 10% Nylon, Kevlar 3%, 2% Spandex
BOLSILLOS	2 bolsillos exteriores, 2 grandes bolsillos interiores
PROTECCIÓN	8-11 capas de 100% poliéster / ventral Protección
REVESTIMIENTO	100% de malla de poliéster
PESO / TAMAÑO	1,700 Kg / XS -> 4XL



MATERIALE	65% polyester, 20% Cordura, 10% Nylon, Kevlar 3%, 2% Spandex
TASCHE	2 tasche esterne, 2 grandi tasche interne
PROTEZIONE	8-11 strati di 100% poliestere / ventrale Protezione
RIVESTIMENTO	100% maglia del poliestere
PESO / TAGLIA	1,7000 Kg / XS -> 4XL



# AUTHENTIC CLASSE 1

CODE : AUMA



MATIÈRE	Polyester 150 g - hydrophobe.
PROTECTION	Poignet bord cote. Élastique de serrage avec stop cordon aux coudes.
POIDS / TAILLE	0,650 Kg / taille unique



FABRIC	Hydrophobic polyester 150 g.
PROTECTION	Wrist score board. Elastic clamping with stop cord elbows.
WEIGHT / SIZE	0,650 Kg / one size



MATERIAL	Polyester 150 g - hydrophob.
SCHUTZ	Wrist-Score Board. Elastische Spann mit stoppen Kabel Ellbogen.
GEWICHT / GRÖßE	0,650 Kg / eine Größe



MATERIA	Poliéster 150 g - hidrófobo.
PROTECCIÓN	tablero de puntuación muñeca. de sujeción elástica con dejar de codos espinal.
PESO / TAMAÑO	0,650 Kg / talla única



MATERIALE	Poliestere 150 g - idrofobo.
PROTEZIONE	Quadro di valutazione del polso. bloccaggio elastico con smettere di gomiti del midollo.
PESO / TAGLIA	0,650 Kg / taglia unica



## INFINITY CLASSE 1

CODE : INMA



MATIÈRE	Polyester 150 g - hydrophobe
PROTECTION	Poignet bord cote. Élastique de serrage avec stop cordon aux coudes. Protection métacarpe
POIDS / TAILLE	0,650 Kg / taille unique



FABRIC	Hydrophobic polyester 150 g.
PROTECTION	Wrist score board. Elastic clamping with stop cord elbows. protection pastern
WEIGHT / SIZE	0,650 Kg / one size



MATERIAL	Polyester 150 g - hydrophob.
SCHUTZ	Wrist-Score Board. Elastische Spann mit stoppen Kabel Ellbogen. Schutz Fessel
GEWICHT / GRÖßE	0,650 Kg / eine Größe



MATERIA	Poliéster 150 g - hidrófobo.
PROTECCIÓN	Tablero de puntuación muñeca. de sujeción elástica con dejar de codos espinal.metacarpo protección
PESO / TAMAÑO	0,650 Kg / talla única



MATERIALE	Poliestere 150 g - idrofobo.
PROTEZIONE	Quadro di valutazione del polso. bloccaggio elastico con smettere di gomiti del midollo. protezione metacarpo
PESO / TAGLIA	0,650 Kg / taglia unica

